

Creation of Global Library Compatible Custom Templates

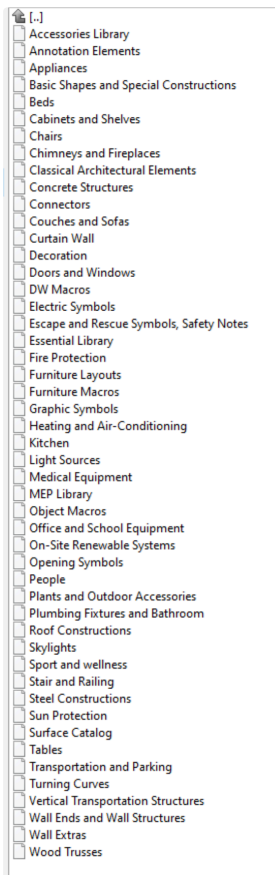
There are two ways to update custom templates to make them compatible with the Global Library:

- (1) Building a Package Template starting with Own Monolith Template
- (2) Building a Package Template starting with the INT Based (OFFLINE) template

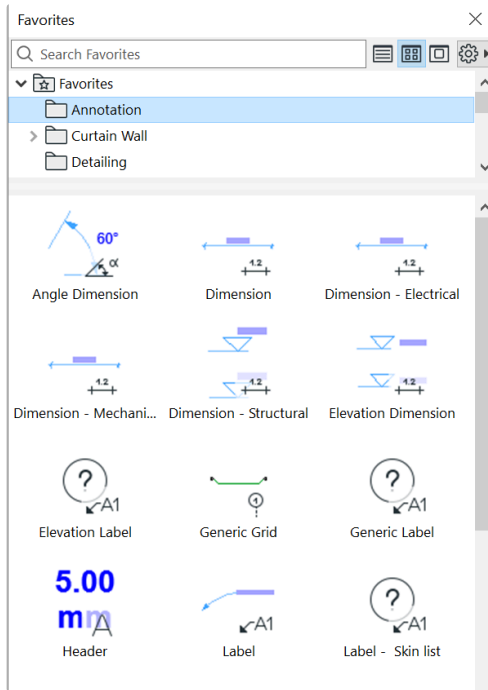
(1) Building a Package Template starting with Own Monolith Template

By starting with your own template from AC27 the following changes need to be made:

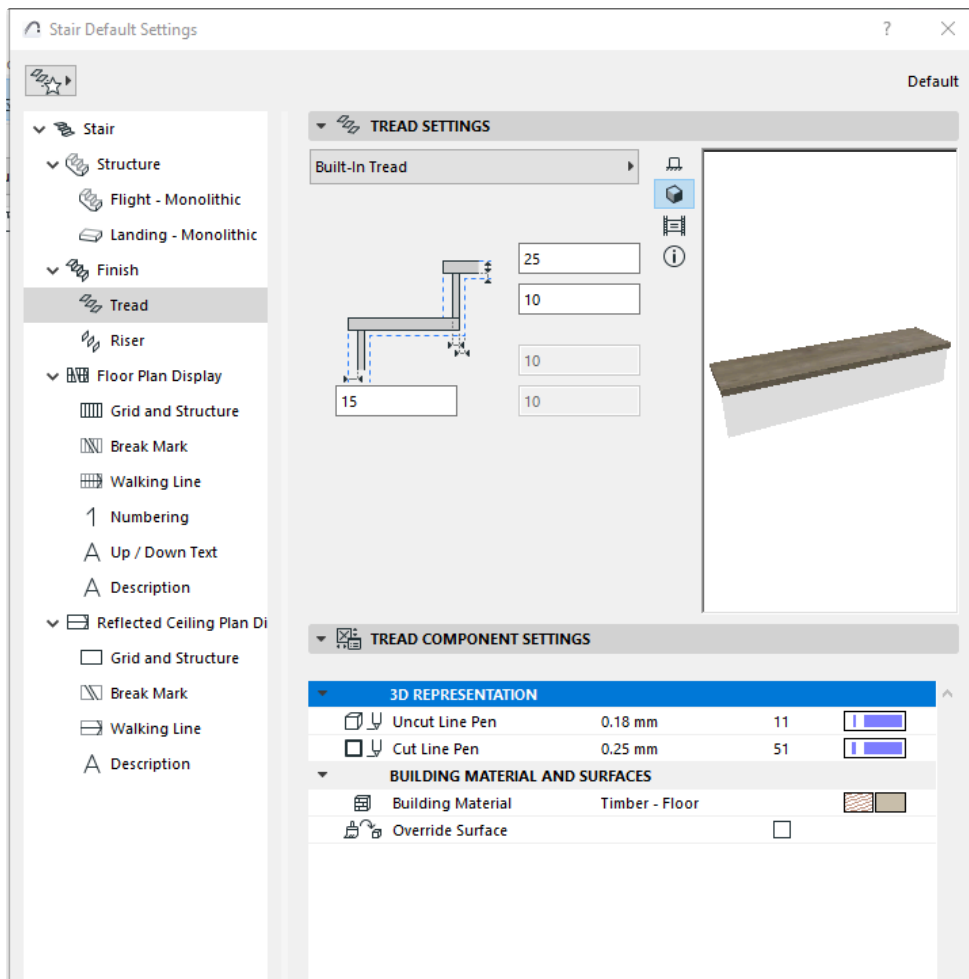
- Deleting monolith libraries and loading Library Packages in Library Manager
 - Selecting and loading default Library Packages
 - There is no need but it is possible to load all Library Packages by default
 - The final list depends on your choice



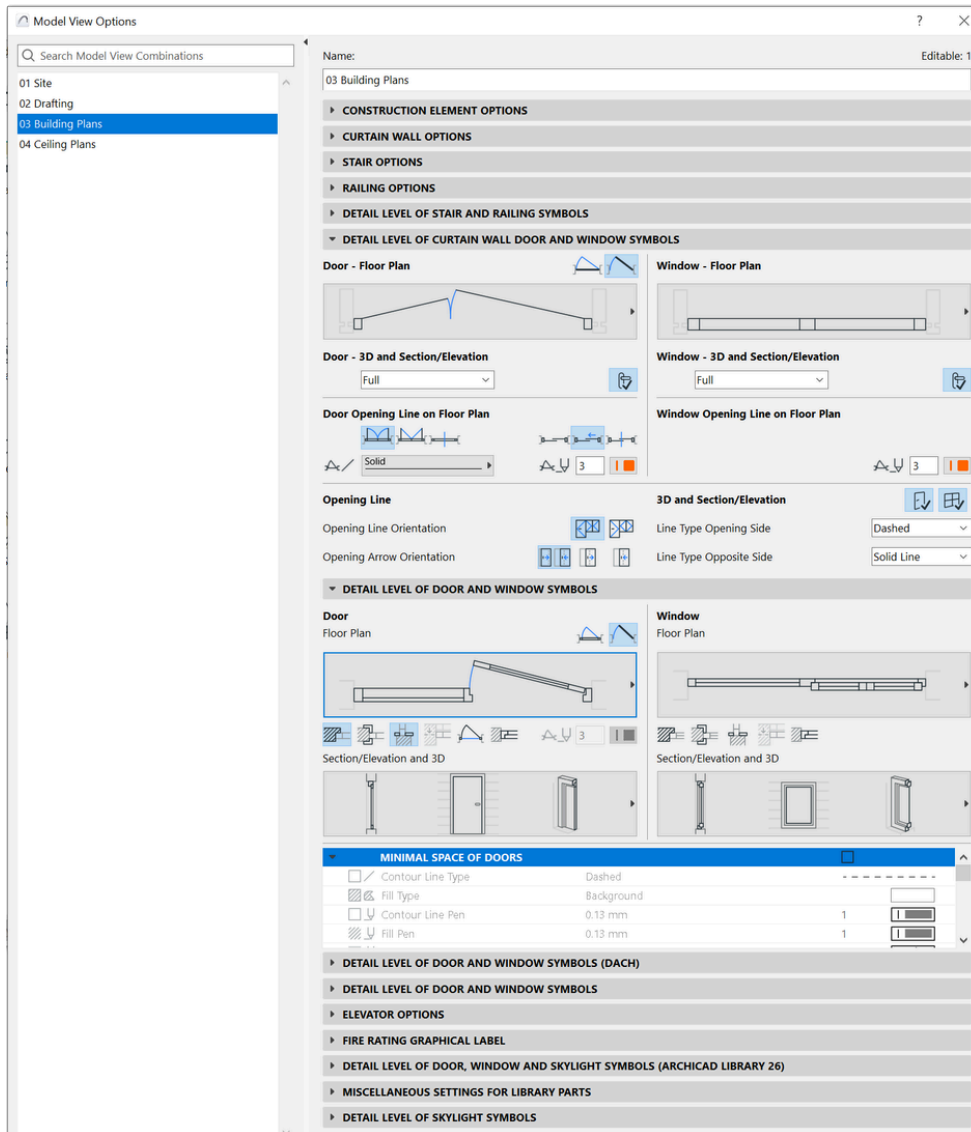
- Setting Favourites
 - After the Library Packages are loaded you can recognise your Libpart related Favourites by question marked preview pictures
 - Recreating Libpart Favourites e.g.: Annotation, Furniture, Door, Railing Components etc. favourites
 - Deleting unused missing favourites



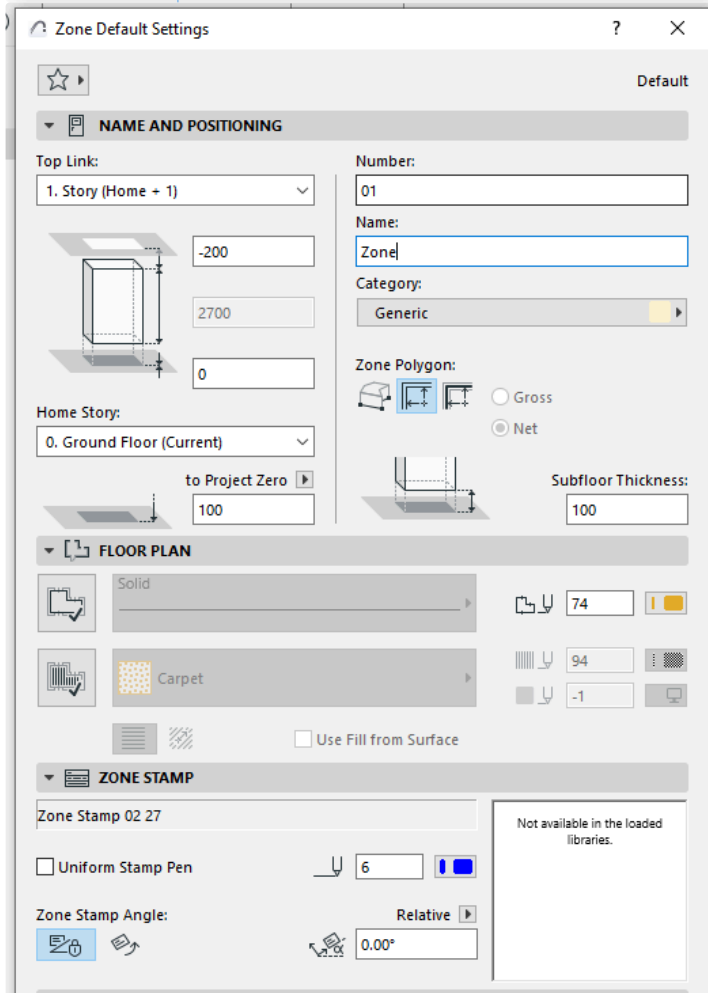
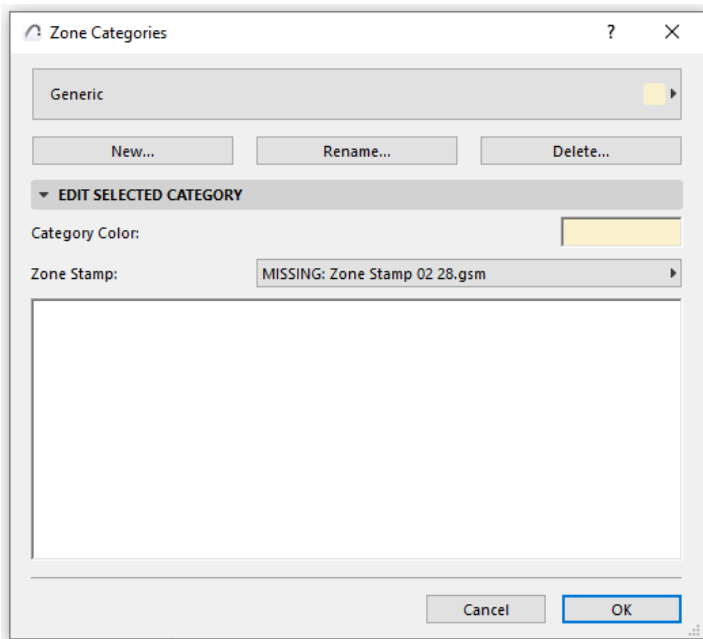
- Selecting and Updating Tool Defaults
 - Applying Favourites in Tool Settings Dialogs (if there are Favourites with Tool Defaults)
 - Pay special attention to Tools with Components e.g.: Stair Components, Railing Components, Curtain Wall Components



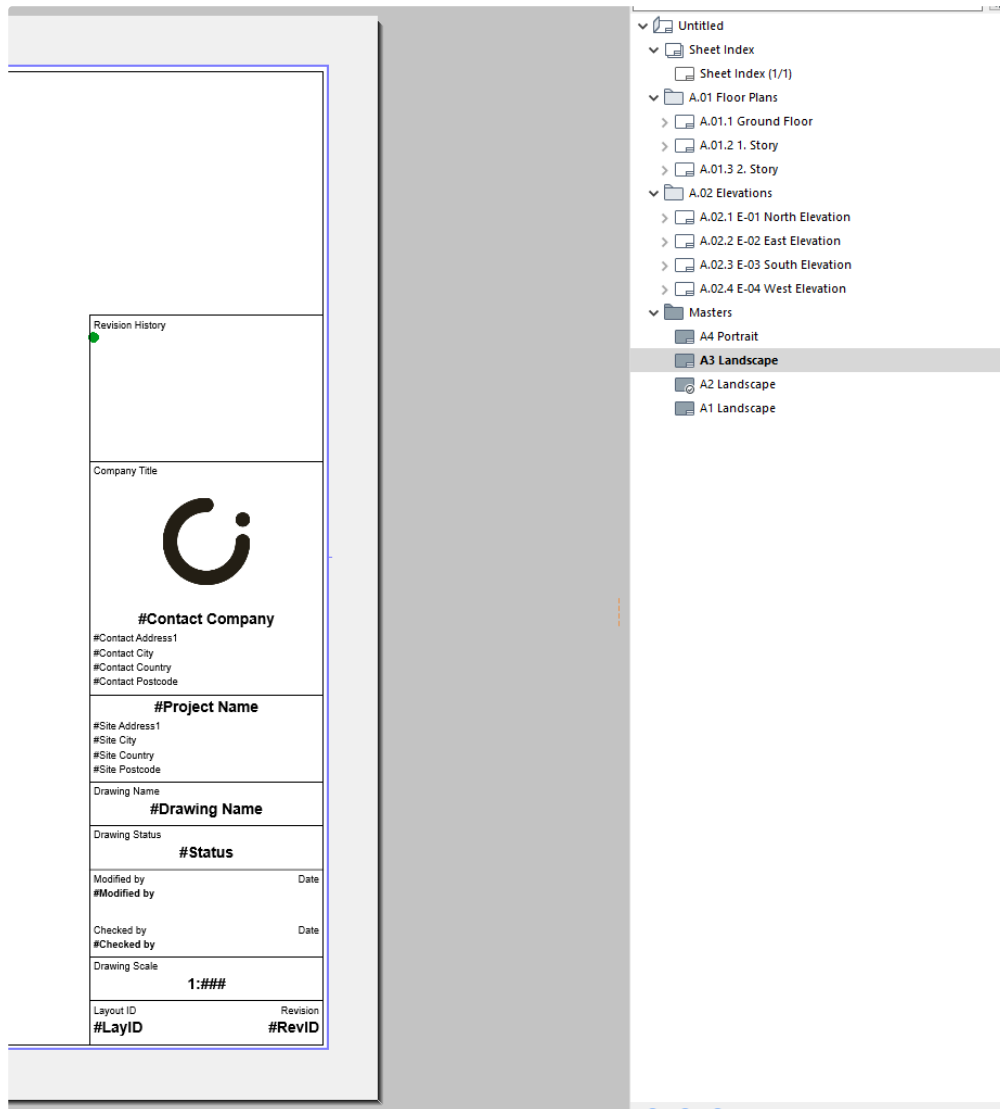
- Model View Option settings with new functions
 - Updating or recreating library related MVO settings



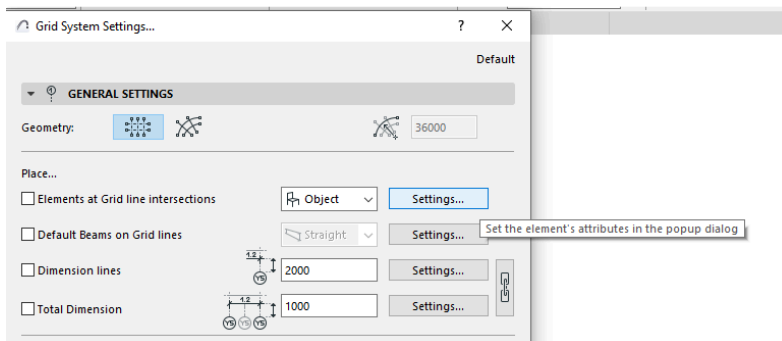
- Replacing Zone Stamps in Zone Category settings



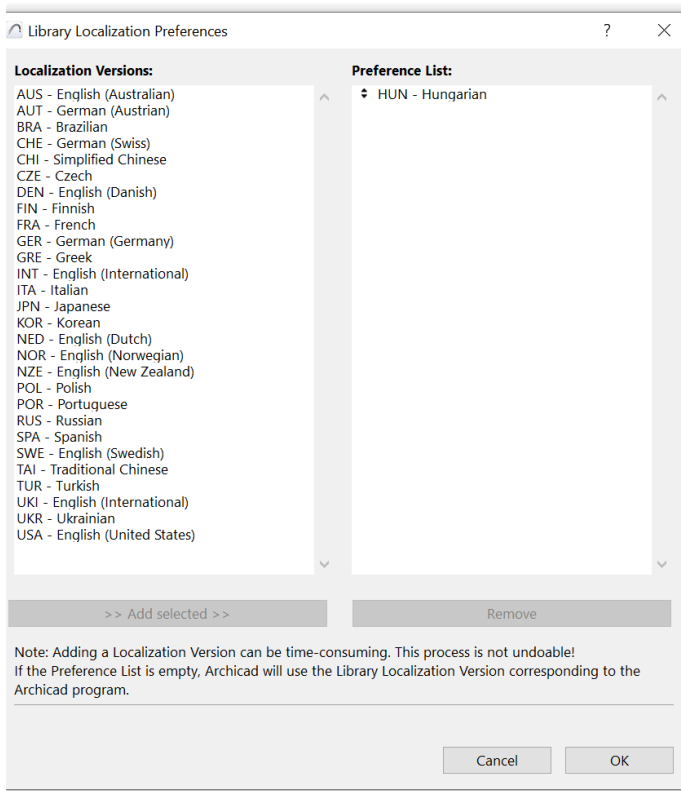
- Replacing placed elements
 - Elevations, Sections on Floor Plans
 - Revision History in Master Layouts
 - Any other pre-placed library parts



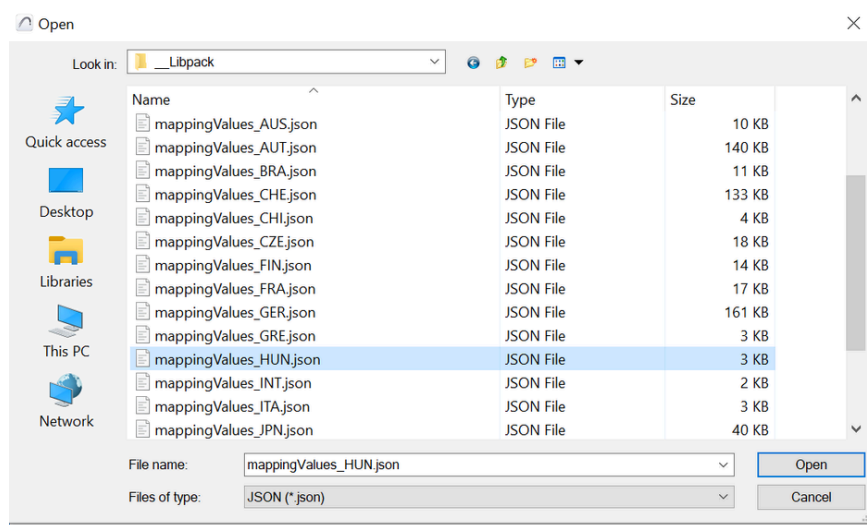
- Grid System Settings - Optional
 - Default object at Place Elements at Grid line intersections settings



- Setting default language or language order with Library Localization Preferences
 - This function defines the display language of library parts



- Loading MappingValues file
 - Import the Mapping Value Table file relevant to your Archicad version.
 - You can download them from here: <https://graphisoft.sharefile.com/d-s1c788733874245bfbc9445228e0238>
 - This file contains LOC attribute meanings



(2) Building a Package Template starting with the INT Based template

The other option is to use an INT Clone Template as a starting point. Here the amount of work depends on how much difference there is between the INT Clone and your own template. Fortunately there are several functions in Archicad where settings can be exported and imported. These import-export workflows can be used at every non-library related field.

The rebuild might affect the following areas:

- *Element Attributes (all etc: Surfaces, Pen Sets, Buildin Materials)*
- *Document related display setting (MVO, GO, Renovation, Layer Combinations, Pen Set)*
- *Rendering Scenes*
- *Properties, Classifications*
- *IFC Translators, with Property Mapping, Type Mapping, Layer Mapping*
- *Placed elements*
 - *View points (placed Elevations, Sections, detailed settings of these tools)*
 - *Preprepared Details, Worksheets*
- *Navigator related settings*
 - *Saved Views in View Map*
 - *Layouts, Master Layout*
 - *Publisher Sets*
 - *Schedules*
 - *Project Indexes*
- *Add-on data and settings*
 - *e.g.: List Areas listing settings in GER and POL versions*
 - *e.g.: CI Tools related favorites in NZE version*
 - *RoofMaker, Trussmaker defaults*
- *MEP related settings*
 - *MEP Systems*
 - *MEP tool defaults*
 - *MEP Preferences*
- *SAM related settings*
 - *Analytical Model generation rules*
 - *SAF translator preferences*
 - *Load Categories*
 - *Load Mapping*
- *Favorites*
 - *If any attribute, property, classification is different from INT then INT favorites are not useful as is, so that they should be updated with local settings. All of them should be checked and updated not only library related ones but Wall, Slab, Beam, Column etc. Construction elements, 2D elements*
- *Tool defaults*
 - *Wall, Door, Window Tool etc.*
 - *Line, Fill, Grid Tool etc.*
- *Project Preferences*
 - *Dimension Standards*
 - *Calculation Rules*
 - *Stair Rules*
 - *Project Location*
 - *Working Unit settings*
- *Grid Snap settings and Editing Plane*

- *On-screen View Options*