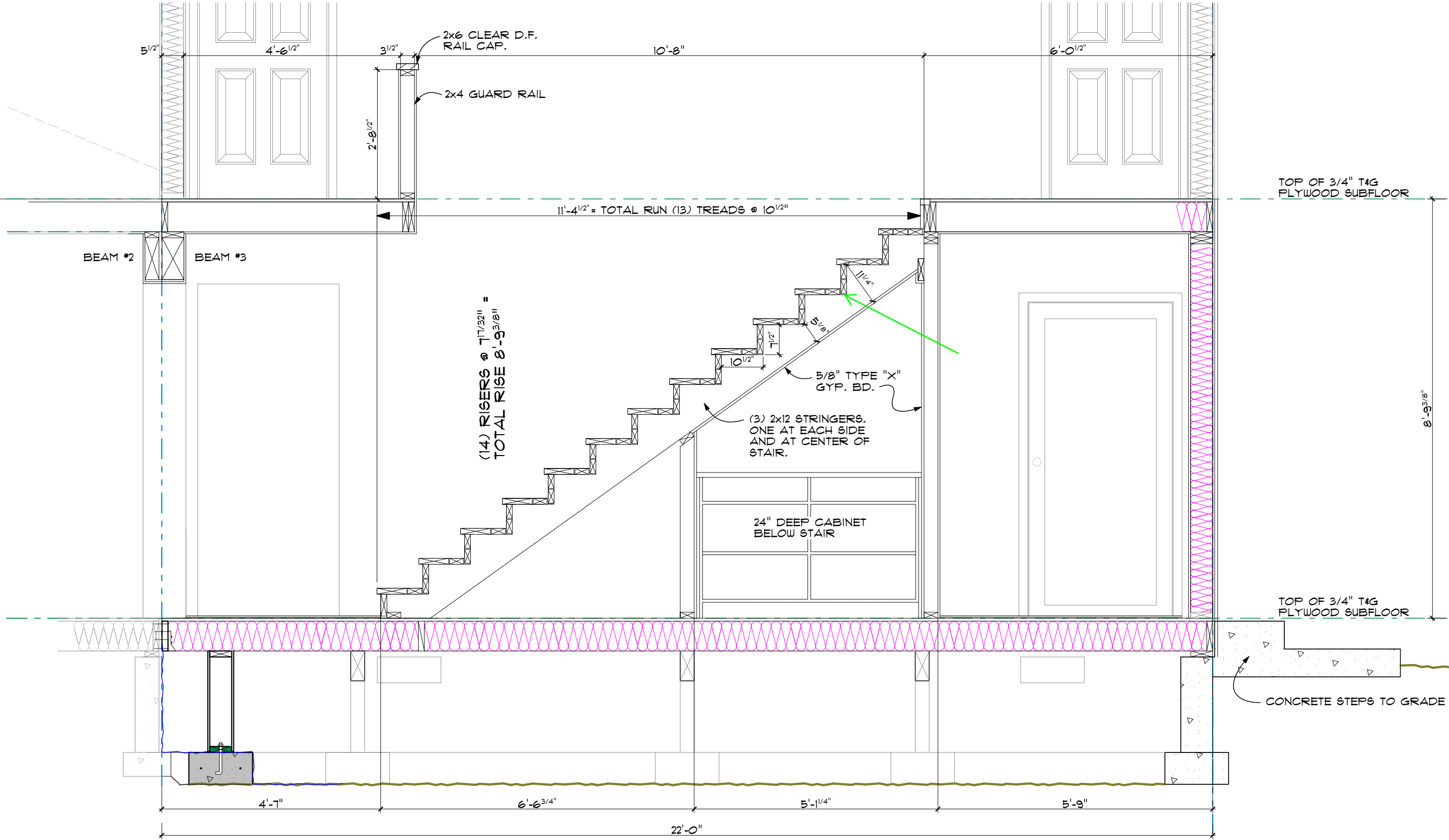


2

4



2x6 CLEAR D.F.
RAIL CAP.

2x4 GUARD RAIL

11'-4 1/2" = TOTAL RUN (13) TREADS @ 10 1/2"

(14) RISERS @ 1 17/32" =
TOTAL RISE 8'-9 3/8"

5/8" TYPE "X"
GYP. BD.

(3) 2x12 STRINGERS,
ONE AT EACH SIDE
AND AT CENTER OF
STAIR.

24" DEEP CABINET
BELOW STAIR

TOP OF 3/4" T&G
PLYWOOD SUBFLOOR

TOP OF 3/4" T&G
PLYWOOD SUBFLOOR

CONCRETE STEPS TO GRADE

8'-9 3/8"

4'-7" 6'-6 3/4" 5'-11 1/4" 5'-9"

22'-0"