

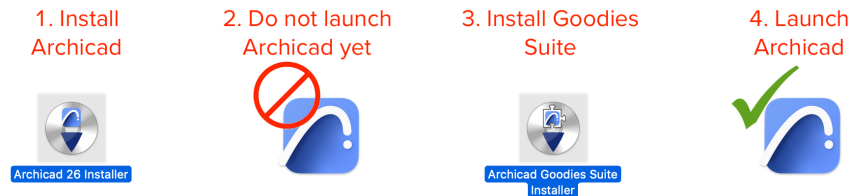
Adding Goodies to Menus

Due to some changes in recent versions of Archicad, after installing Goodies, items from the Goodies suite will not appear in the menus. This issue has a high priority in our development but since this is a complicated issue, we need some time to find out how to address it correctly. In the meantime we have a couple of workarounds:

Download the Goodies suite here: <https://graphisoft.com/downloads/goodies/>

Two Different Workarounds

- A. [Uninstall Archicad](#). Reinstall Archicad + Goodies, THEN launch Archicad
One way to avoid the issue is if you install Archicad, then do not open Archicad, but immediately install the Goodies suite, and THEN launch Archicad. Under these steps they will be added to the default Work Environment menus.



DONE! Now launch Archicad and the Goodies items will be in their proper menu locations.

- Accessories: **Design > Design Extras > Accessories**
- Polygon Counting Tool: **Window > Palettes > PolyCount**
- 3D Studio In: **File > Interoperability > 3D Studio**
- Mesh to Roof: **Design > Design Extras > Create Roofs from Mesh**
- Interior Wizard: **Design > Design Extras > Interior Wizard**
- Profiler: **Design > Design Extras > Profiler**
- Construction Simulation: **Document > Listing Extras > Construction Simulation**
- Intersections in Layer Combinations: **Options > Intersections in Layer Combinations**
- Check Duplicates Tool: **Edit > Check Duplicates**

OR...

- B. If you have already launched Archicad and do not wish to Uninstall and follow the steps above, you can get the same results by deleting a Work Environment folder on the computer.

Page 2: macOS
Page 4: Windows operating system



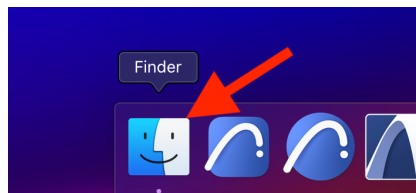
1. BACKUP CUSTOM WORK ENVIRONMENT

If you already have a custom Work Environment with keyboard shortcuts, menus and toolbars, Store and Export your customized Work Environment for safe-keeping as outlined in this PDF: [Store and Export Work Environment.pdf](#)

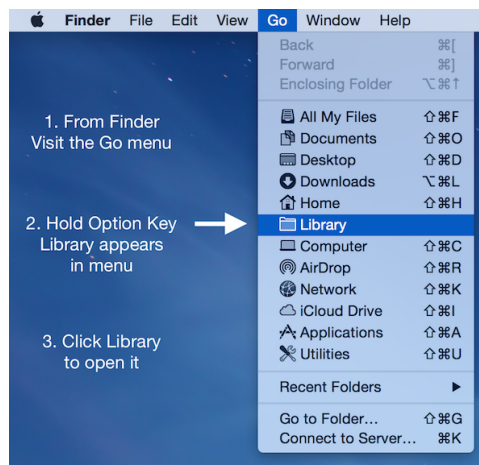
2. Quit Archicad

3. DELETE the WORK ENVIRONMENT folder

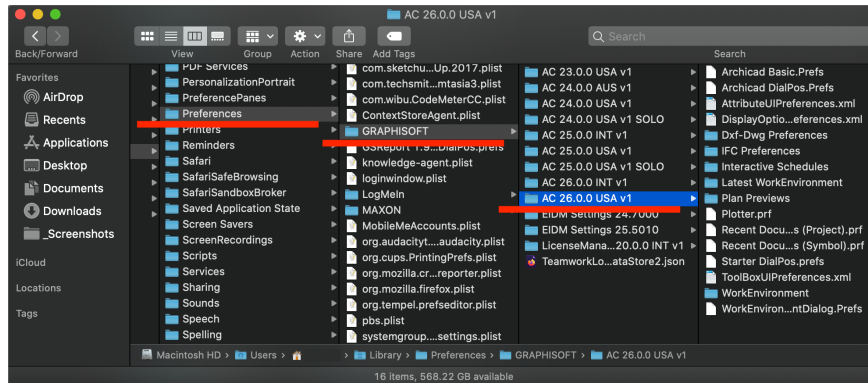
a. Click on Finder in the dock to make it active



b. At the top of your computer screen, click on the “Go” menu and hold the “Option” key to make “Library” appear and then click on it.

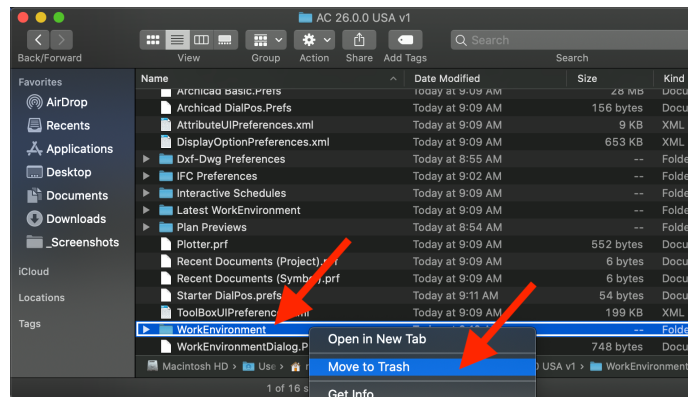


c. Now in the Finder window that appears, go into Preferences/GRAPHISOFT/AC XX.0.0 USA v1*



* where “XX” is the version of Archicad you are using.

d. Select the “Work Environment” folder and Move it to Trash.



e. Launch Archicad and Goodies items will be in their default locations...

- Accessories: **Design > Design Extras > Accessories**
- Polygon Counting Tool: **Window > Palettes > PolyCount**
- 3D Studio In: **File > Interoperability > 3D Studio**
- Mesh to Roof: **Design > Design Extras > Create Roofs from Mesh**
- Interior Wizard: **Design > Design Extras > Interior Wizard**
- Profiler: **Design > Design Extras > Profiler**
- Construction Simulation: **Document > Listing Extras > Construction Simulation**
- Intersections in Layer Combinations: **Options > Intersections in Layer Combinations**
- Check Duplicates Tool: **Edit > Check Duplicates**

Learn about Goodies: <https://community.graphisoft.com/t5/Setup-License-articles/About-Goodies/ta-p/303640>

IMPORTANT! To use the Accessories add-on with your project, be sure to add the Accessories library to the project. File > Library Manager... click the Add library button and browse to the “Accessories Library XX” inside the Archicad XX folder (where XX is the version of Archicad you are using).

More about using the Accessories Add-on: <https://community.graphisoft.com/t5/Design-articles/Accessories-Add-On/ta-p/303775>

Windows

1. BACKUP CUSTOM WORK ENVIRONMENT

If you already have a custom Work Environment with keyboard shortcuts, menus and toolbars, Store and Export your customized Work Environment for safe-keeping as outlined in this PDF: [Store and Export Work Environment.pdf](#)

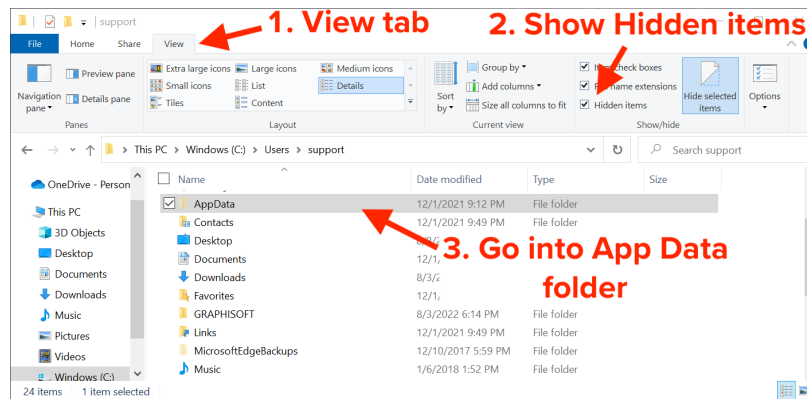
2. Quit Archicad

3. DELETE the WORK ENVIRONMENT folder

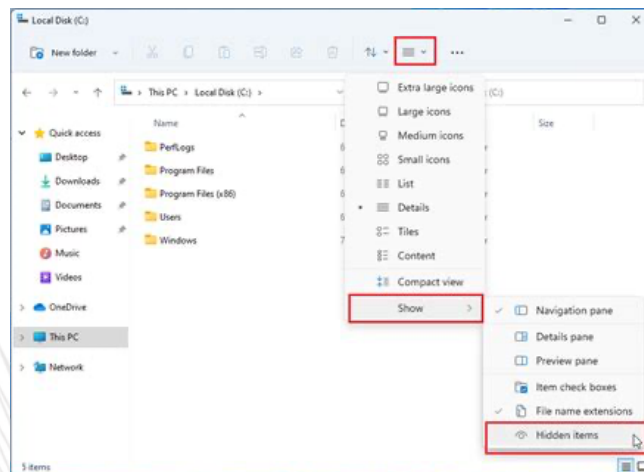
a. First open a File Explorer window and go to C:\Users\your_username\GRAPHISOFT

b. Now make sure you can see Hidden Items:

Windows 10: click the View tab and check the box for “Hidden Items”



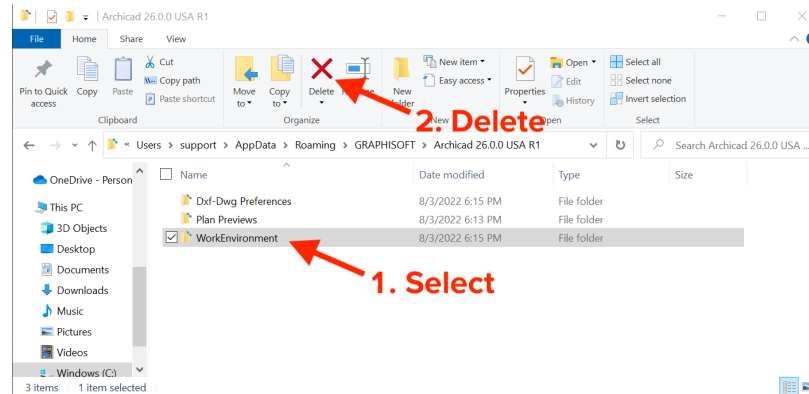
Windows 11: click the 3 lines in the header of the File Explorer and choose Show > Hidden Items.



c. Now go into AppData\Roaming\GRAPHISOFT\Archicad XX.0.0. USA R1*

* where “XX” is the version of Archicad you are using.

d. Select the “Work Environment” folder and Delete it.



e. Launch Archicad and Goodies items will be in their default locations...

- Accessories: **Design > Design Extras > Accessories**
- Polygon Counting Tool: **Window > Palettes > PolyCount**
- 3D Studio In: **File > Interoperability > 3D Studio**
- Mesh to Roof: **Design > Design Extras > Create Roofs from Mesh**
- Interior Wizard: **Design > Design Extras > Interior Wizard**
- Profiler: **Design > Design Extras > Profiler**
- Construction Simulation: **Document > Listing Extras > Construction Simulation**
- Intersections in Layer Combinations: **Options > Intersections in Layer Combinations**
- Check Duplicates Tool: **Edit > Check Duplicates**

Learn about Goodies: <https://community.graphisoft.com/t5/Setup-License-articles/About-Goodies/ta-p/303640>

!!IMPORTANT! To use the Accessories add-on with your project, be sure to add the Accessories library to the project. File > Library Manager... click the Add library button and browse to the “Accessories Library XX” inside the Archicad XX folder (where XX is the version of Archicad you are using).

More about using the Accessories Add-on: <https://community.graphisoft.com/t5/Design-articles/Accessories-Add-On/ta-p/303775>