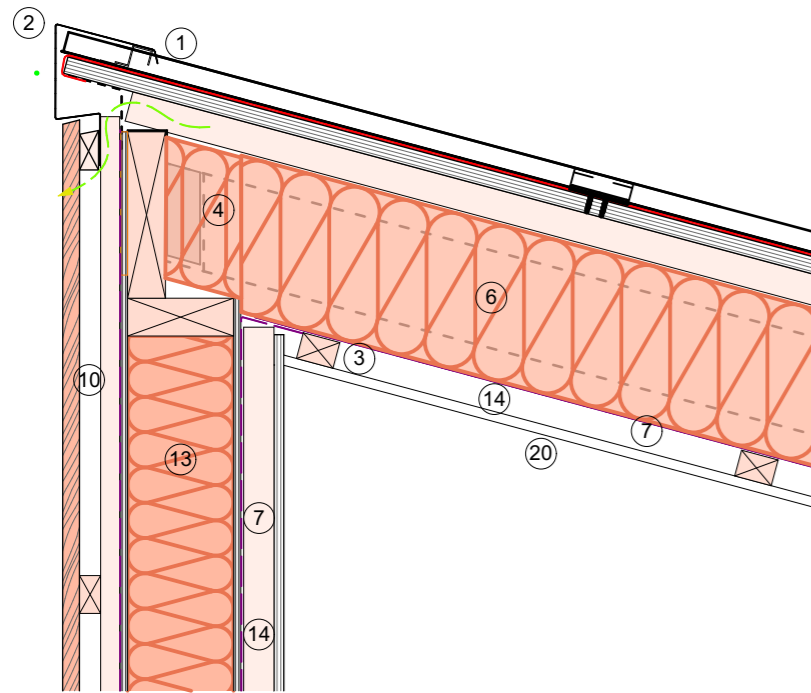
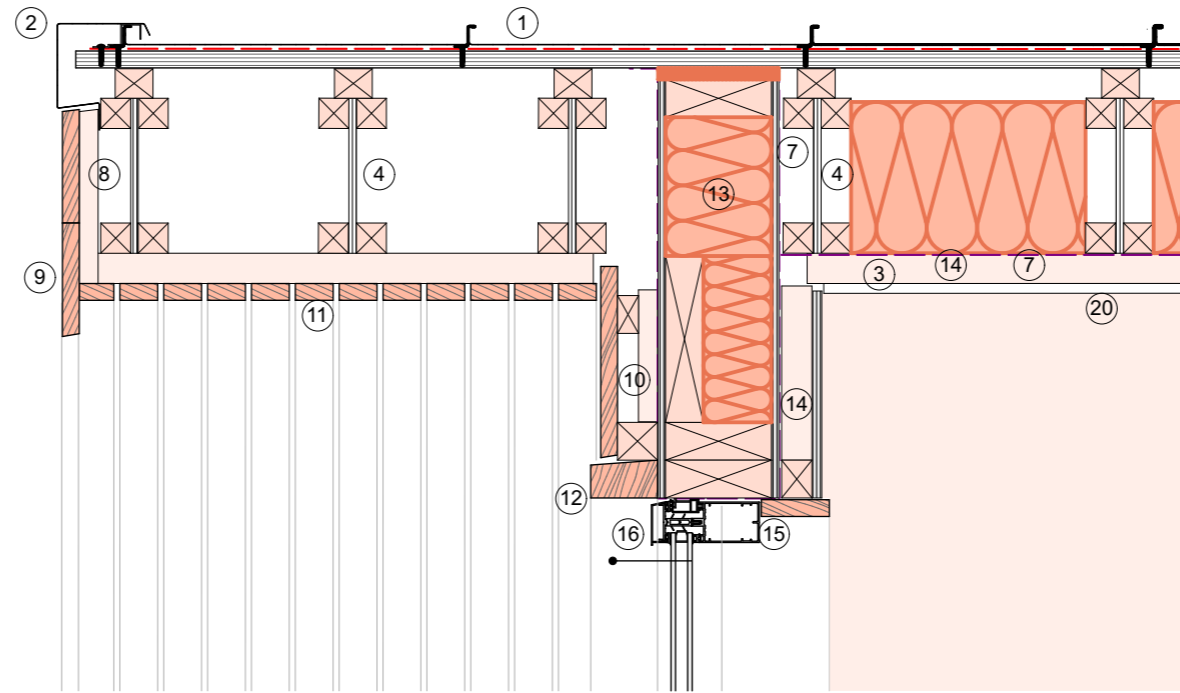


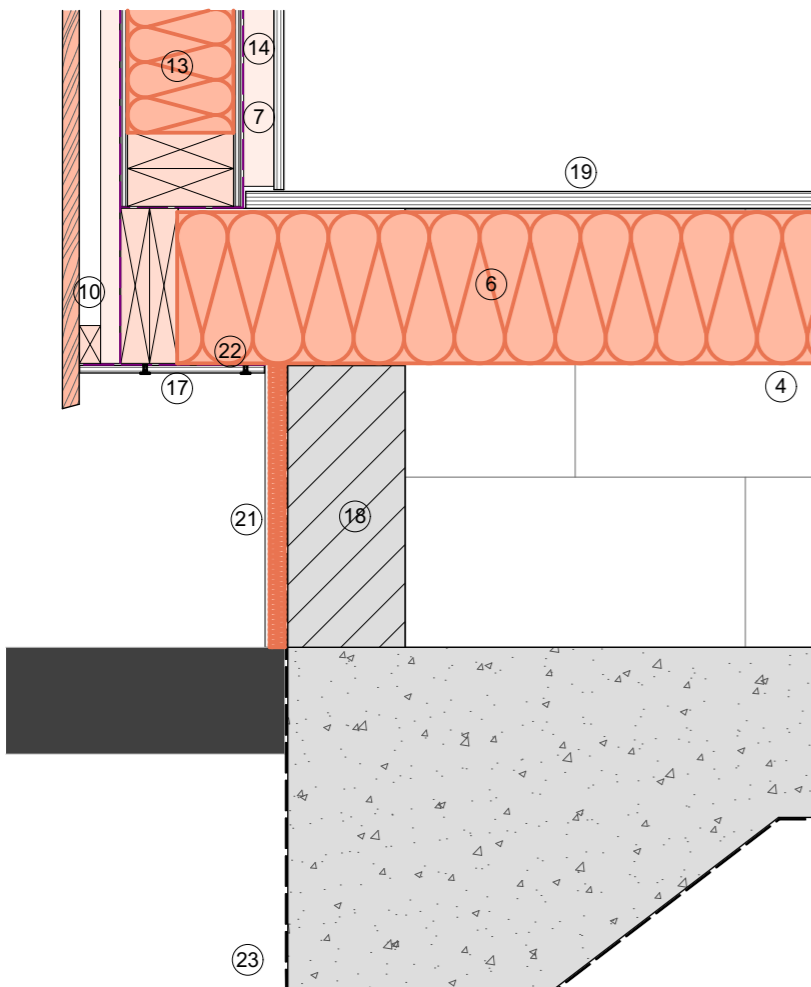
Rev	Initials	Notes	Date
A	JA	Details amended	04/08/21
B	PS	Issued for Construction	29/03/22
C	JA	Additional details added	30/05/22



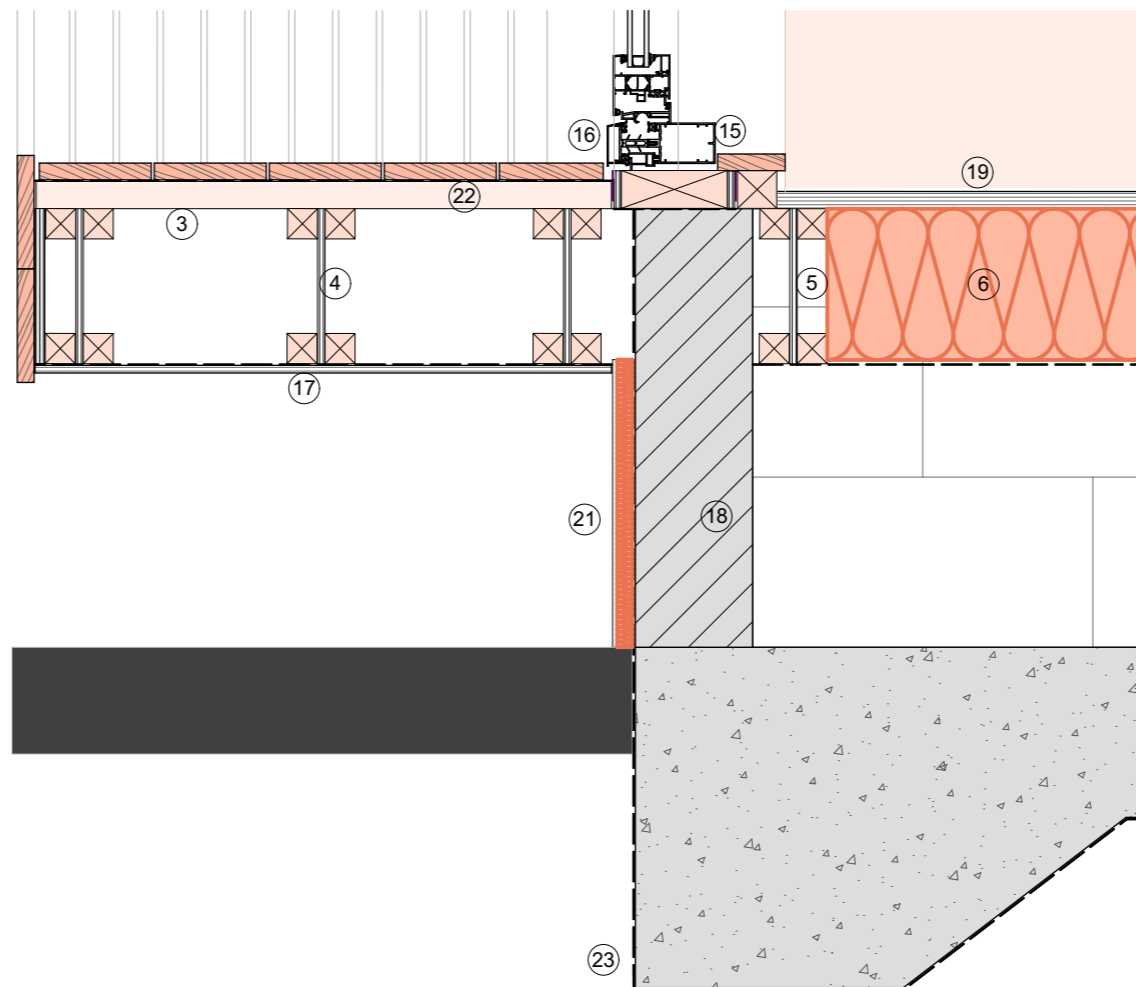
1. Monopitch Eaves Detail



2. Alcove Verge Detail



3. Base of Façade / Pad Junction Detail



4. Alcove Base/Foundation Detail

KEY:

1. Euroclad Vieo roof system consisting of Vieo sheets with proprietary edge clips on VCL on 18mm ply deck
2. Bespoke PPC edge flashings with concealed fixings
3. Treated SW battens
4. Composite timber I-joists 200mm deep at 400 centres with 40mm treated SW battens above & below
5. Composite timber I-joists 200mm deep at 600 centres with 40mm treated SW battens above & below
6. 200mm Rockwool insulation between i-joists
7. Breather membrane
8. teated SW battens fixed over i-joist flanges
9. 125x20mm larch fascia boarding
10. 125x20mm larch boarding with 8mm gaps rainscreen cladding on 38x25mm treated SW battens & counter-battens top edge of cladding and top batten to be chamfered
11. 50x20mm larch boarding with 8mm gaps on 38x25mm treated SW battens & counter-battens
12. 100x50mm larch boarding external surrounds to windows and doors
13. Proprietary 150mm timber frame with 10mm OSB on both faces lined with 15mm treated Birch Ply on 40mm SW battens
14. Air gap/service void
15. 150x20mm Larch internal window reveals
16. Technal curtain walling, windows and doors - refer to TE-22
Windows to have 2mm thick PPC Aluminium sill with upstand stop ends, RAL7016 from Archital Ltd, TF1 6QX, t: 01952 453229 - refer to finishes drawing TE-12
17. 10mm OSB soffit to underside of i-joists
18. 150mm concrete blockwork on concrete raft to detail
19. 18mm WBP ply floor
20. 12.5mm plasterboard ceiling on battens
21. 6mm Eternit boarding on 25mm insulation
22. Insect mesh
23. 1800 gauge Polythene DPM under slab laid on 30mm sand blinding
24. Chamfered larch timber support to PPC pressed metal cill